



# Sergé D-light

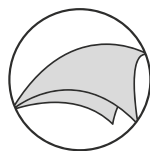
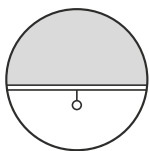
OF 0%

WK01D

FABRIC CODE

The Sergé 1% fabric with a translucent water tight coating protecting against heat, glare and rain. It also allows more privacy.

Can be used both exterior and interior



Only suitable for zip-systems

# Sergé D-light

OF 0%

**WK01D**
**FABRIC CODE**

## Yarn

Technical specifications	Average Values	Standard
<b>Titer</b>	165 tex	ISO 1889 (2009)
<b>Weighted composition</b>	Glass 41.5%, PVC 58.5%	ISO 3801 (1977)
<b>Diameter</b>	0.38 mm	

## Fabric

<b>Type of fabric</b>	PVC-coated fiberglass fabric with a translucent coating
<b>Weave pattern</b>	twill weave
<b>Widths</b>	3000 mm
<b>Roll length (nominally)</b>	30 m

Technical specifications	Average Values	Standard
<b>Thickness</b>	0.6 mm	ISO 5084 (1996)
<b>Mass</b>	602 g/m <sup>2</sup>	ISO 3801-5 (1977)
<b>Fire resistance</b>	M2 FR	NF P92-503 (1995) NFPA 701 (2010)
<b>Breaking strength</b>	warp 190 daN, weft 280 daN	ISO 13934-1 (2013)
<b>Elongation at break</b>	warp 3.8%, weft 6.2%	ISO 13934-1 (2013)
<b>Tear resistance</b>	warp 9.0 daN, weft 7.2 daN	EN ISO 4674-1A (2016)
<b>Colorfastness (white excluded)</b>	Blue scale grade 6-7	ISO 105-B02 (2014)
<b>Resistance to water penetration</b>	≥ 1 000 mbar/ ≥ 100 000 Pa	EN 20811 (1992)
<b>Resistance to surface wetting</b>	Grade 4	ISO 4920 (2012)
<b>Adhesion strength</b>	Length direction 12.3 N/20 mm, width direction 11.9 N/20 mm	ISO 2411 (2017)

## Processing

General - specifications are purely indicative and may not be considered as binding. Colors may vary from the samples shown.

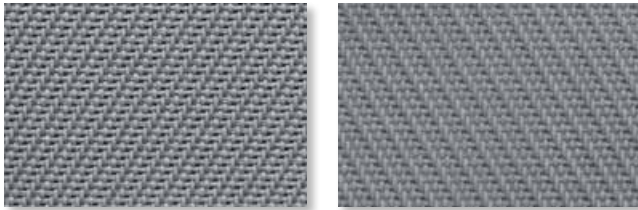
<b>Cutting</b>	crush or ultrasonic
<b>Welding</b>	thermal, HF, ultrasonic, sewing
<b>System</b>	only suitable for zip-systems
<b>Cleaning</b>	remove dust from the fabric surface, then wipe gently with a humid soft sponge while using a mild detergent
<b>Use</b>	do not use near heating source

Copyright Helioscreen 2019. Registered trademark. A Helioscreen product.

### Our fabric with a translucent water tight coating

- Water tight coating
- Enhanced privacy
- Relatively low in weight
- Relatively thin
- Ideal for pergola and other outdoor living systems

### 108108 grey A / B Width: 2850 mm



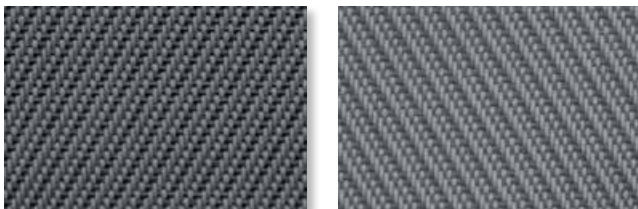
#### Solar Heat & Light Control Properties

	Ts	Rs	As	Tv	TVdiff	TVdir	Tuv	TVdif-h	Glare control
A	2.3	20.0	77.7	0.8	0.8	0.0	0.1	0.7	Class 4
B	2.4	22.5	75.1	0.9	0.8	0.1	0.1	0.8	Class 3

#### g<sub>tot</sub>

	A		B		C		D	
	ext.	int.	ext.	int.	ext.	int.	ext.	int.
A Values	0.19	0.60	0.14	0.59	0.08	0.50	0.07	0.29
A Classes	2	0	3	0	4	0	4	2
B Values	0.18	0.58	0.14	0.58	0.08	0.50	0.07	0.29
B Classes	2	0	3	0	4	0	4	2

### 108118 grey-black A / B Width: 2850 mm



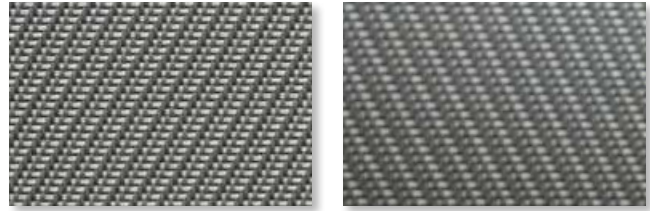
#### Solar Heat & Light Control Properties

	Ts	Rs	As	Tv	TVdiff	TVdir	Tuv	TVdif-h	Glare control
A	2.1	15.2	82.7	1.4	1.0	0.4	0.4	1.2	Class 3
B	1.9	18.4	79.7	1.1	0.9	0.2	0.2	0.9	Class 3

#### g<sub>tot</sub>

	A		B		C		D	
	ext.	int.	ext.	int.	ext.	int.	ext.	int.
A Values	0.19	0.63	0.15	0.62	0.09	0.52	0.08	0.30
A Classes	2	0	2	0	4	0	4	2
B Values	0.19	0.61	0.14	0.60	0.08	0.51	0.07	0.29
B Classes	2	0	3	0	4	0	4	2

### 108101 grey-white A / B Width: 2850 mm



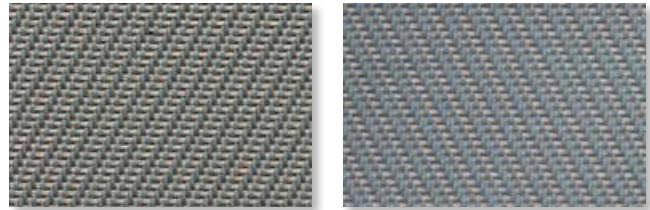
#### Solar Heat & Light Control Properties

	Ts	Rs	As	Tv	TVdiff	TVdir	Tuv	TVdif-h	Glare control
A	3.5	31.5	65.0	1.6	1.5	0.1	0.1	1.4	Class 3
B	3.7	32.0	64.3	1.7	1.6	0.1	0.1	1.5	Class 3

#### g<sub>tot</sub>

	A		B		C		D	
	ext.	int.	ext.	int.	ext.	int.	ext.	int.
A Values	0.17	0.53	0.13	0.54	0.08	0.47	0.07	0.28
A Classes	2	0	3	0	4	1	4	2
B Values	0.17	0.53	0.13	0.53	0.08	0.46	0.07	0.28
B Classes	2	0	3	0	4	1	4	2

### 108112 grey-sand A / B Width: 2850 mm



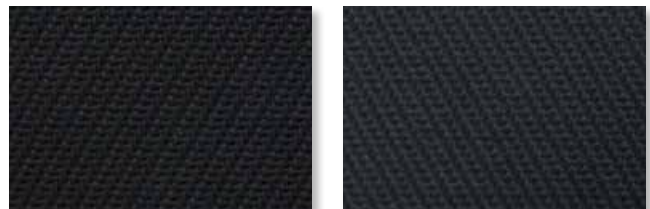
#### Solar Heat & Light Control Properties

	Ts	Rs	As	Tv	TVdiff	TVdir	Tuv	TVdif-h	Glare control
A	3.2	25.3	71.5	1.3	1.2	0.1	0.1	1.1	Class 3
B	3.3	26.7	70.0	1.2	1.2	0.0	0.1	1.1	Class 4

#### g<sub>tot</sub>

	A		B		C		D	
	ext.	int.	ext.	int.	ext.	int.	ext.	int.
A Values	0.18	0.57	0.14	0.57	0.08	0.49	0.07	0.29
A Classes	2	0	3	0	4	1	4	2
B Values	0.18	0.56	0.14	0.56	0.08	0.48	0.07	0.29
B Classes	2	0	3	0	4	1	4	2

### 118118 black A / B Width: 2850 mm



#### Solar Heat & Light Control Properties

	Ts	Rs	As	Tv	TVdiff	TVdir	Tuv	TVdif-h	Glare control
A	0.6	6.2	93.2	0.6	0.3	0.3	0.2	0.5	Class 3
B	0.7	9.7	89.6	0.6	0.4	0.2	0.2	0.5	Class 3

#### g<sub>tot</sub>

	A		B		C		D	
	ext.	int.	ext.	int.	ext.	int.	ext.	int.
A Values	0.20	0.68	0.15	0.66	0.09	0.55	0.08	0.30
A Classes	2	0	2	0	4	0	4	2
B Values	0.20	0.66	0.14	0.64	0.08	0.54	0.08	0.30
B Classes	2	0	3	0	4	0	4	2