

BLACKOUT 100%

SATINÉ 21154



COLLECTION
2018
2021

INTELLIGENT FABRICS FOR SOLAR PROTECTION



EXTERNAL AND
INTERNAL APPLICATION

www.sunscreen-mermet.com

SATINÉ 21154

BLACKOUT 100%

SATINÉ 21154

THE **BLACKOUT FABRIC WHICH MATCHES SATINÉ 5500**
FABRIC FOR THE BALANCE OF THE FACADE

100%
BLACKOUT
AND THERMAL COMFORT

210 CM
LARGE WIDTH

- The blackout screen-looking fabric for **EXTERNAL AND INTERNAL TOTAL BLACKOUT ROLLER BLIND SYSTEMS** (with retentive buttons/studs, deep side channels...)
- Perfect match with side channels systems such as **ZIP**
- **100% OF LIGHT AND UV RAYS BLOCKED** at 100.000 Lux
- **THERMAL COMFORT:** rejects up to **99% OF SOLAR ENERGY** ($g_{tot} = 0,01$ / glazing $g = 0,32$ and $U = 1,1$ W/m²K) when installed externally
- Waterproof, weather-resistant and UV fading resistant
- Health/Safety: conforms to standard requirements for buildings open to the public

TECHNICAL DATA

SATINÉ 21154			
Composition	28% Fibreglass - 72% PVC		
Fire, smoke classification and other official test reports*	M1 (F) - NFP 92 503 BS (GB) - 476 Pt 6 & 7 Class 0	C UNO (IT) - UNI 9177 HHV: 14,2 MJ/kg (9,40 MJ/m ²)	
Openness factor	0%		
Opacity	100% at 100.000 lux (500 W)		
UV screen	100%		
Width	210 cm		
Weight/m ²	660 g ± 10% - ISO 2286 - 2		
Thickness	0,75 mm ± 10% - ISO 2286 - 3		
Colour Fastness to light (scale of 8)	Screen side: 7 - ISO 105 B02 (white not graded) Backing side: 7/8 ISO 105 B02 and ISO 105 B04		
Mechanical resistance	Breaking	Tear	Folding
Warp	> 225 daN/5 cm	≥ 7 daN	≥ 150 daN/5 cm
Weft	> 190 daN/5 cm	≥ 7 daN	≥ 100 daN/5 cm
	ISO 1421	EN 1875-3	ISO 1421**
Elongation (warp and weft)	< 5% - ISO 1421		
Packaging	Rolls of 33 lm		
Making up	Advice note on request - Making up of fabric panels with retentive systems on the side edges (with retentive buttons/studs, deep side channels...)		

This product's technical data are in conformity with this brochure as of the date of publication. MERMET SAS reserves the right to change the technical data; only those provided on the company's website www.sunscreen-mermet.com shall be deemed to be authentic. Where applicable, MERMET SAS also reserves the right to withdraw this product from sale should any of the technical properties or characteristics set out above prove to be inadequate or rendered impossible as a result of a change in regulations or in knowledge or understanding.

* Reports available on request, please contact Mermet

** Internal procedure derived from ISO 1421 standard

WIDTH: 210 CM

0202

2020

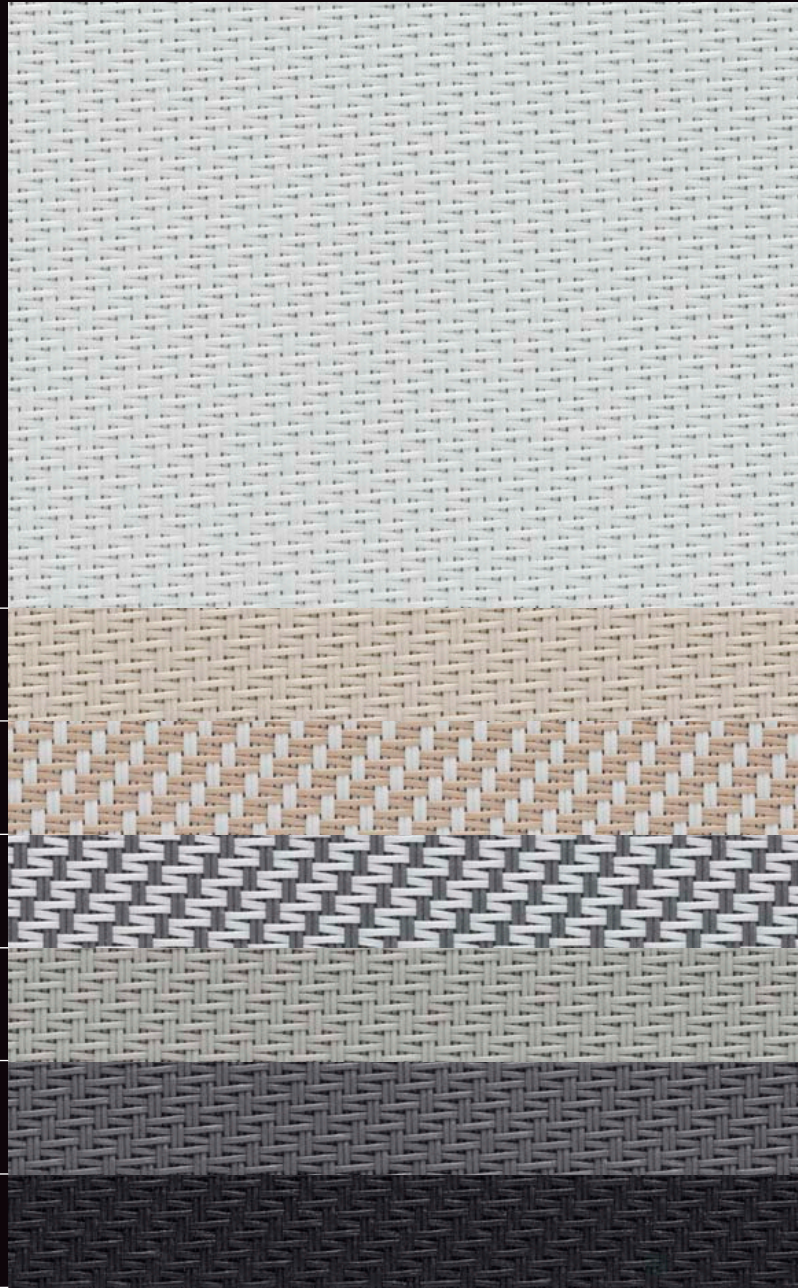
0210

0102

0707

0101

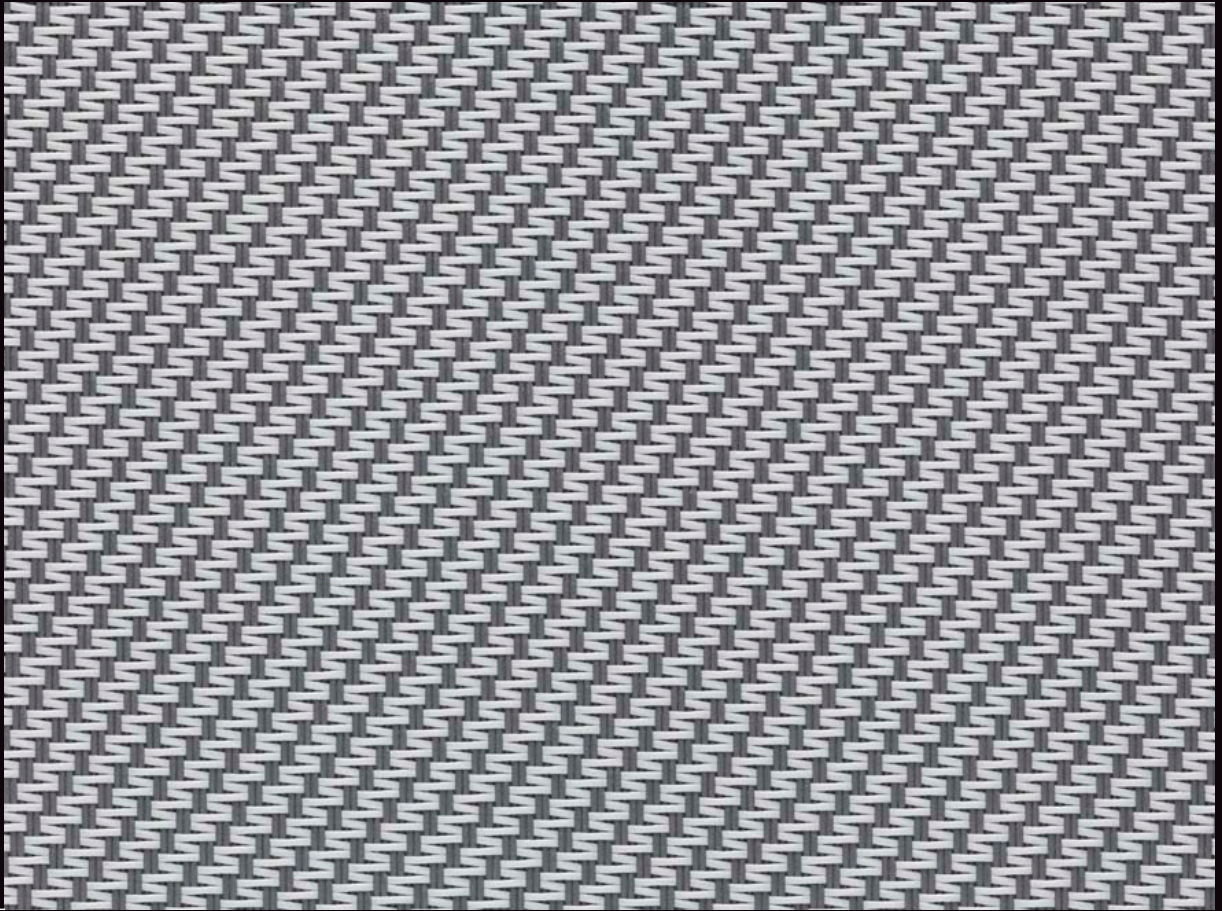
3030



Colours may be slightly different from the actual ones

SERVICE

- Calculation of solar factor g_{tot} (glazing + blind)
- Spectral values and thermal & optical factors available on request
- Specification sheet
- A4 samples and prototypes
- Training on fabrics functionality



0102

THERMAL AND OPTICAL FACTORS in the European standard EN 14501

SATINÉ 21154 OF 0%	Thermal factors					Optical factors
	Fabric			Fabric + Glazing /gtot external blind		Tv
Colours	Ts	Rs	As	C : gv = 0,59	D : gv = 0,32	
Grey Backing	0	34	66	0,02 4	0,02 4	0
0202 White	0	69	31	0,01 4	0,01 4	0
2020 Linen	0	55	45	0,02 4	0,02 4	0
0210 White Sable	0	53	47	0,02 4	0,02 4	0
0707 Pearl	0	39	61	0,02 4	0,02 4	0
0102 Grey White	0	42	58	0,02 4	0,02 4	0
0101 Grey	0	21	79	0,03 4	0,02 4	0
3030 Charcoal	0	6	94	0,03 4	0,03 4	0

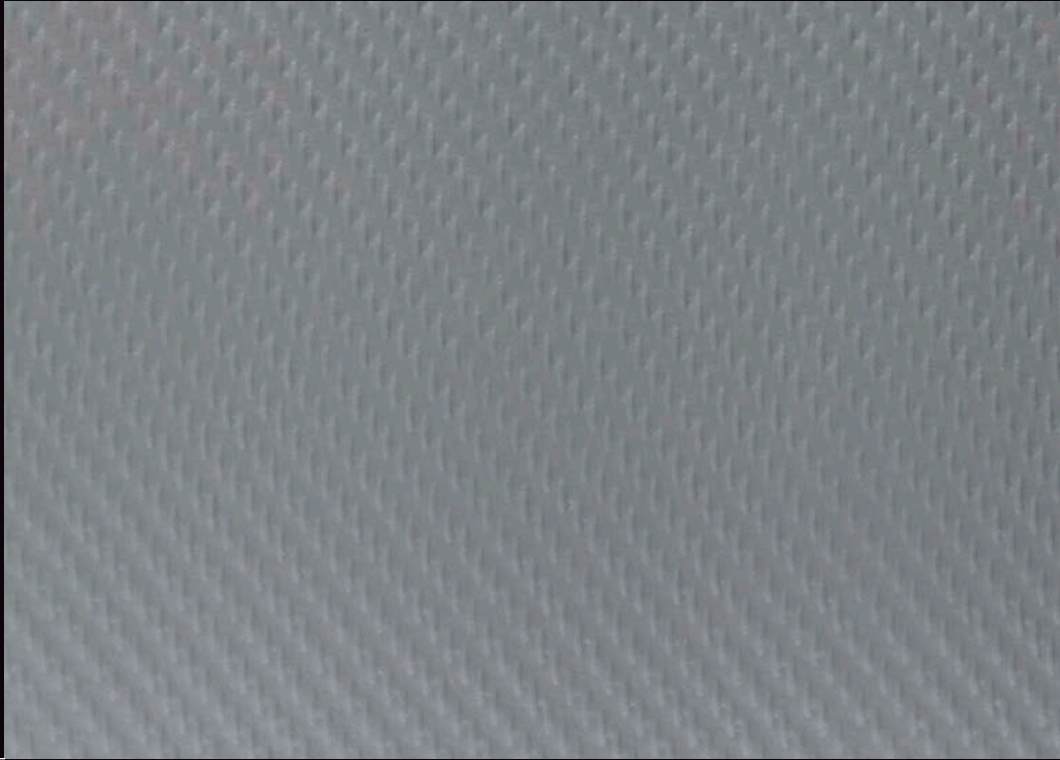
gv = 0,59: Solar factor of standard glazing (C), low-emission 4/16/4 double glazing filled with Argon (U value thermal transmittance = 1,2 W/m²K).

gv = 0,32: Solar factor of standard glazing (D), reflecting low-emission 4/16/4 double glazing filled with Argon (U value thermal transmittance = 1,1 W/m²K).

Comfort classification according to EN 14501 standard: 0 very little effect 1 little effect 2 moderate effect 3 good effect 4 very good effect

Samples tested according to EN 14500 standard defining the measurements and calculation methods as specified in the standard EN 13363-2 "Solar protection devices combined with glazing calculation of solar and light transmittance - part 2: EN 13363-2 detailed method" and EN 410 "Glass in building - Determination of luminous and solar characteristics of glazing".

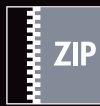
0102



EXTERNAL AND INTERNAL APPLICATIONS



Roller blinds



ZIP Roller blinds



Printable



FIVE YEAR
WARRANTY



LEAD FREE



FIRE
RETARDANT

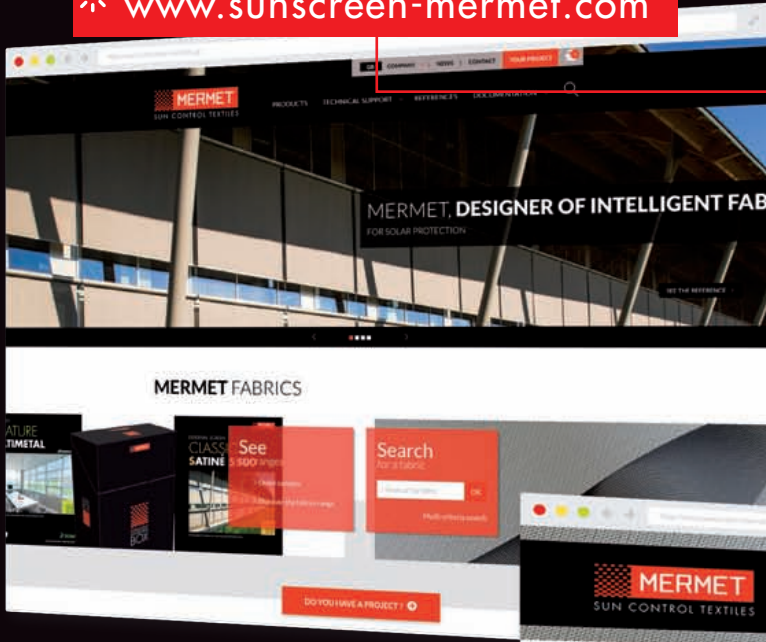


REACH
COMPLIANT

10 000
CYCLES



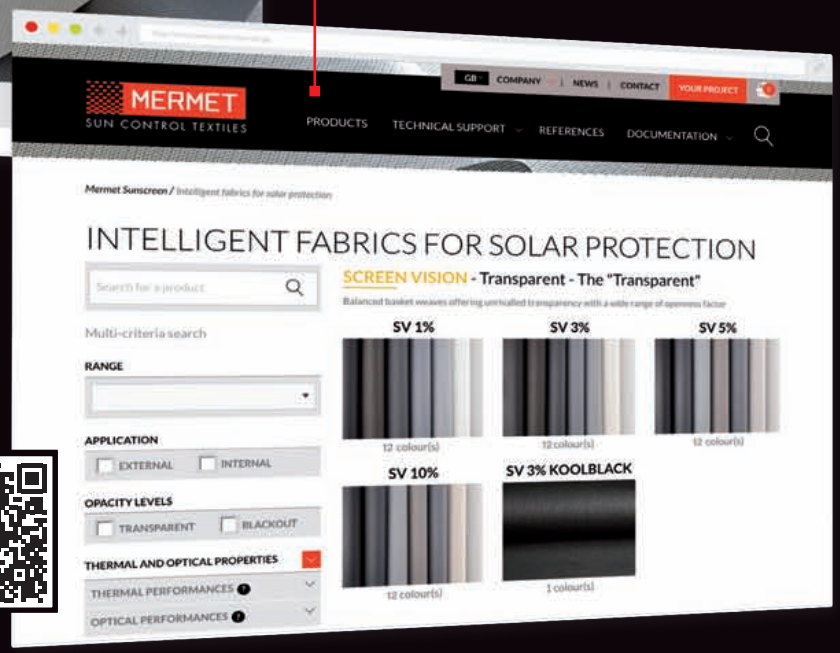
www.sunscreen-mermet.com



**FIND IN 3 CLICKS
THE FABRIC BEST SUITED**
to your project

- A search engine with performances criteria
- Many documents for download
- All products information available
- A library of references

Go directly to the products catalog >



 **MERMET COLLECTION** offers a **wide choice of fabrics** for external and internal application, from transparency to total darkness, for thermal and optical comfort. To receive other brochures from the collection, **contact us.**



58, chemin du Mont Maurin - 38630 Les Avenières Veyrins-Thuellin - France
Tel. +33(0) 474 336 615 - Fax +33(0) 474 339 729

This brochure must be read and interpreted in accordance with the General Terms & Conditions of Sale of MERMET SAS, with which it forms an indissoluble whole. The General Terms & Conditions of Sale that are current at any time are those contained on the MERMET SAS website at the following address: www.sunscreen-mermet.com.